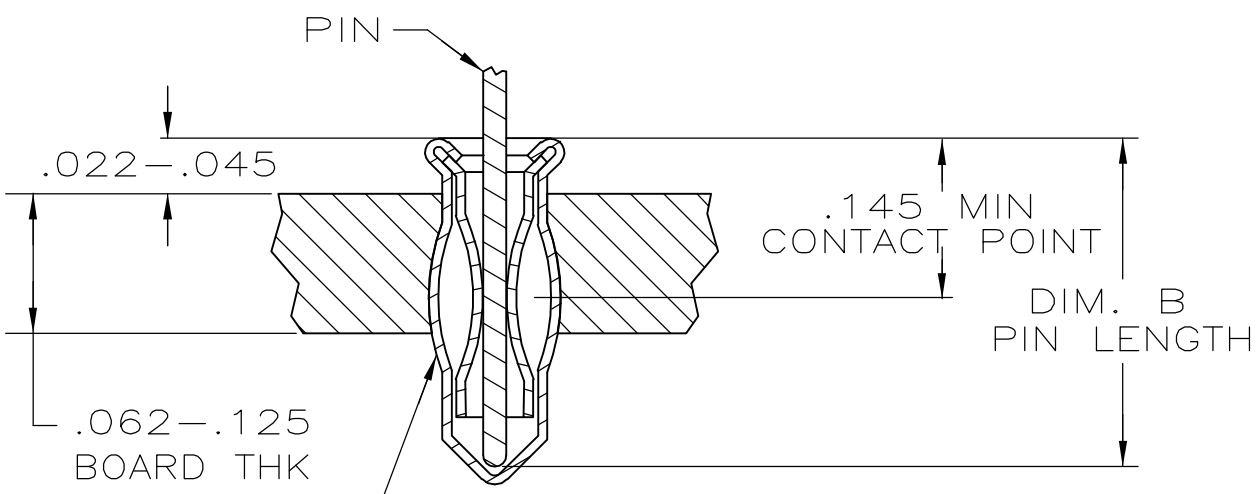
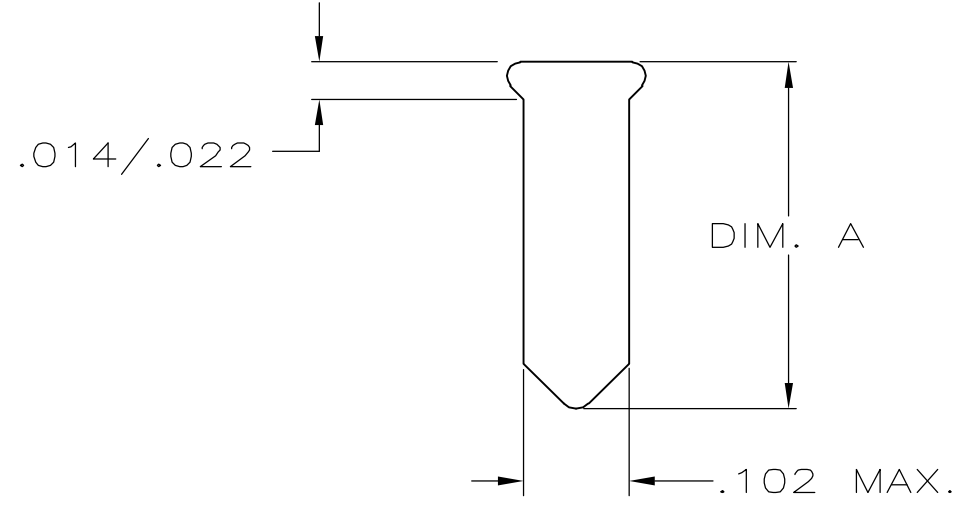
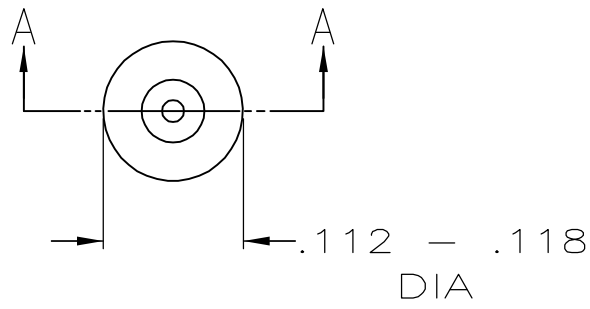


THIS DRAWING IS UNPUBLISHED. RELEASED FOR PUBLICATION
 © COPYRIGHT BY TYCO ELECTRONICS CORPORATION. ALL RIGHTS RESERVED.

LOC		DIST		REVISIONS			
P	LTR	DESCRIPTION		DATE	DWN	APVD	
	E1	REVISED PER ECO-06-018765		13APR07	DH	DB	



SECTION A-A

- MATERIAL:
 EYELET - COPPER (QQ-C-576)
 SPRING - BERYLLIUM COPPER (QQ-C-533)
- TIN PLATE(MIL-T-10727).000150 MIN THK
- GOLD PL(MIL-G-45204).000030 MIN THK OVER NICKEL (QQ-N-290) .000011 MIN THK ON CONTACT AREA.
- TIN PLATE(MIL-T-10727).000100 MIN THK
- TO INSURE 1/2 OZ MIN RETENTION DO NOT EXCEED .004 DIFFERENCE IN PIN DIA WHEN CHANGING TO A SMALLER DIA PIN
- HOLE SIZE FOR HAND INSERTION .105±.002

OBSOLETE	.375 MAX	.408±.008	.042/.049	GOLD Δ 3	TIN Δ 2	645980-3
	.275 MAX	.308±.008		GOLD Δ 3	TIN Δ 2	645980-2
				TIN Δ 4	TIN Δ 2	645980-1
DIM. B	DIM. A	DIA Δ 5	SPRING	EYELET	PART NO	
PIN			FINISH			

THIS DRAWING IS A CONTROLLED DOCUMENT.		DWN 1/24/85 D. HOLLINGSWORTH	tyco Electronics		Tyco Electronics Corporation Harrisburg, PA 17105-3608	
DIMENSIONS: INCHES		TOLERANCES UNLESS OTHERWISE SPECIFIED:	NAME MINIATURE SPRING SOCKET ASSEMBLY NO. 5 SERIES BULLET NOSE			
		0 PLC ± - 1 PLC ± - 2 PLC ± - 3 PLC ± - 4 PLC ± - ANGLES ± -	APVD -		RESTRICTED TO	
MATERIAL -		FINISH -	PRODUCT SPEC -		SIZE CAGE CODE DRAWING NO	
			APPLICATION SPEC -		A3 00779 C-645980	
			WEIGHT -		SCALE NTS SHEET 1 OF 1 REV E1	
			CUSTOMER DRAWING			